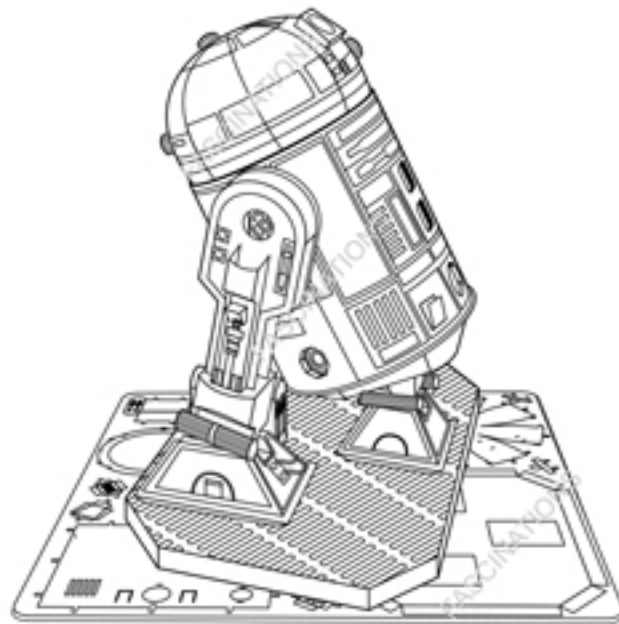




www.starwars.com  
© &™ Lucasfilm Ltd.



R2-D2™

Item No. MMS250

Metal Earth

3D METAL MODEL KITS

360° view



It is highly recommended that you visit [www.metalearth.com/360/mms250](http://www.metalearth.com/360/mms250) to see the completed model before assembling your own

**Legends:**

- E** Engraved side
- NE** Non-engraved side
- Attention point
- Insert tab and bend 90 degrees
- Insert tab and twist 90 degrees

**Assembly tip:**  
If needed, slightly twist tabs to hold parts together then untwist and bend them down for a nice finish

**Recommended tools:**

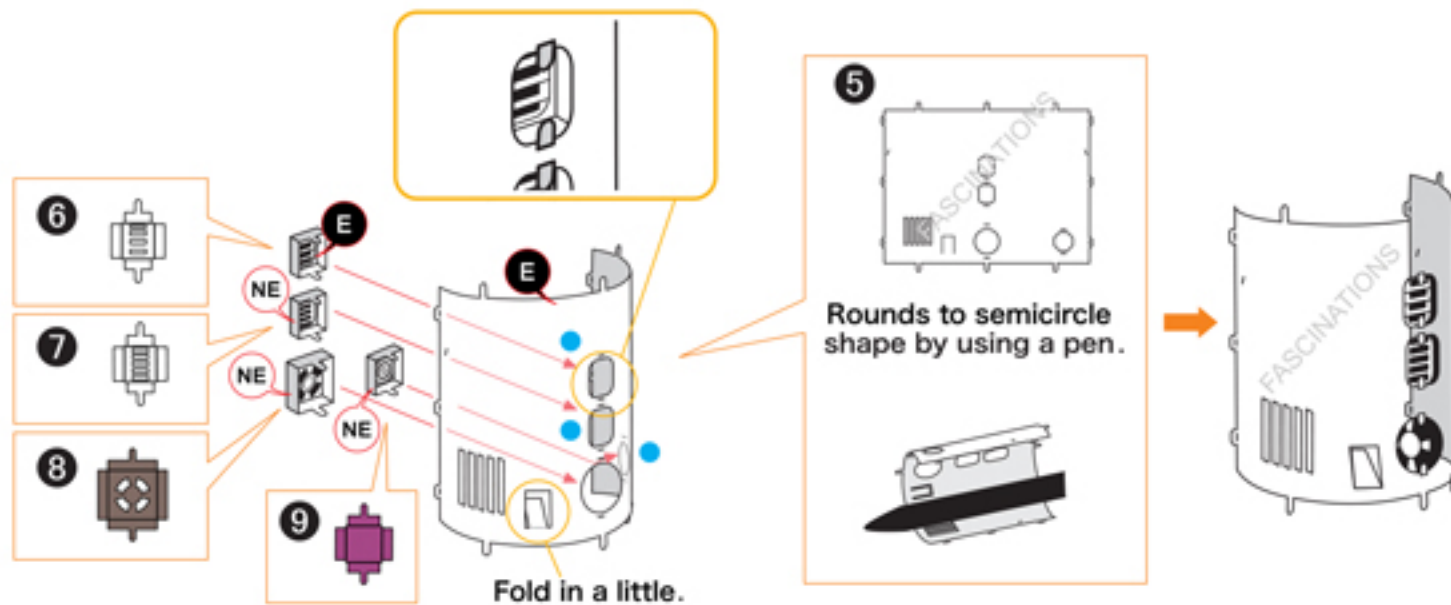
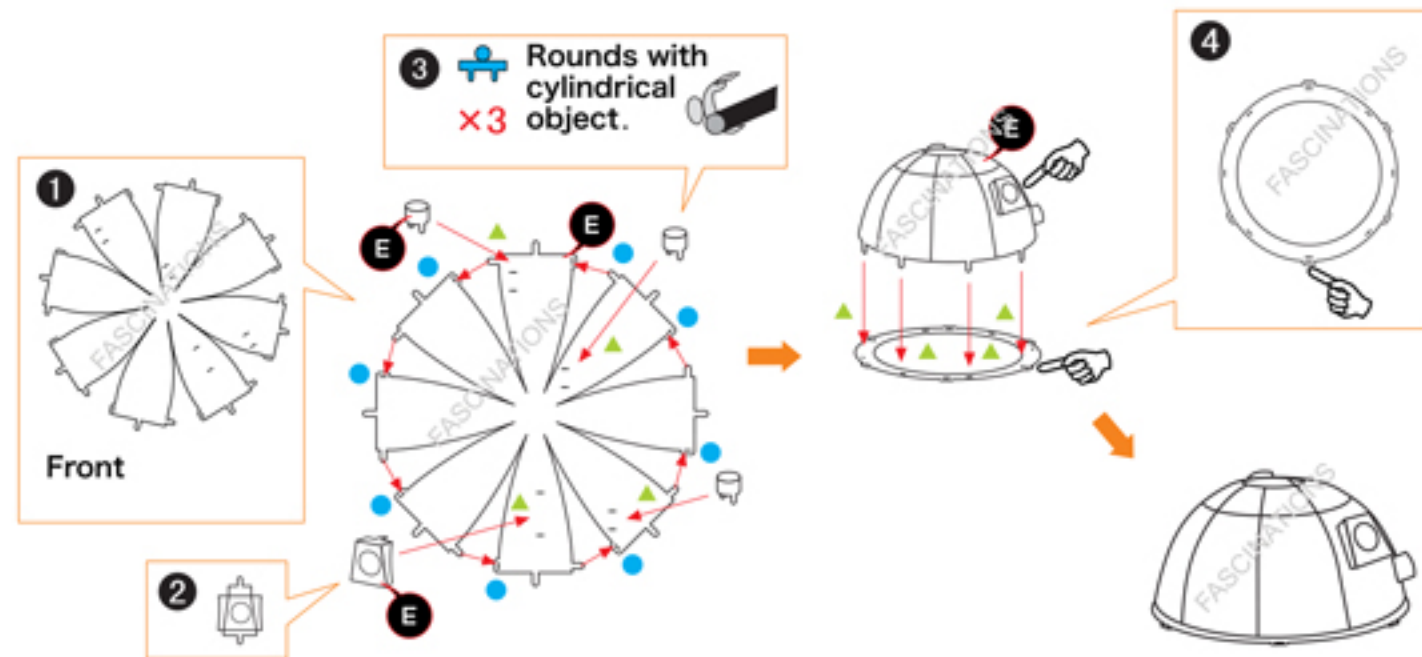
- Wire cutters: helpful for taking parts from the metal sheets.
- Tweezers or needle nose pliers: helpful for folding parts, bending and twisting tabs.

**Notes:**

In order to avoid possible injury from sharp edges, please carefully discard the metal sheet after parts have been removed.

This product is not a toy. Keep out of reach of children.

Assembly Flow Chart



Metal sheets

